

WEEKLY NEWSLETTER

Friday 8th April 2022

Dear Parents/Carers

We have had an amazing week to finish off the Spring term, a huge well done to all the children for this morning's Easter service, and to everyone who virtually attended, I hope you all enjoyed it – I certainly did! The Easter Egg Hunt was very successful, the children were busy around school finding the clues to get their eggs! Thank you to Mrs Cooney for organising.

I was so impressed with the Easter designs we had in school, the hard work and effort that the children put in really showed and I am pleased to announce the winners:

- Pre-school – Eliza's Easter Bonnet
- Zig Zag – Lenny's Easter Garden
- Maldives – Luca's Easter Bonnet
- New Zealand – Fletcher's Easter Bonnet
- Malta – Subhiksha's Easter Garden
- Galapagos – Mia's Easter Bonnet
- Iceland – Frankie's Easter Bonnet
- Jamaica – Olek's Easter Garden
- Hawaii – Orin's Easter Garden

Well done to you all, and of course well done to everyone who entered.

Parent / carer sessions

We would like to say thank you to everyone who has spoken to their child's class teacher this week, it has been great to hear about the progress the children are making.

Unfortunately, many of the online appointments made this time were missed. In future, if you are unable to attend your appointment, we ask that you inform your child's class teacher or the school office as soon as possible. We understand that sometimes this can't be helped but the teaching staff do set this time aside in order to speak with you. We appreciate your continued support.

Questionnaire

Back in January, we asked you to complete our questionnaire giving your views of the school. Attached to the newsletter is the results and the areas raised. Thank you for taking the time to complete this, if you have any further questions do not hesitate to contact me.

Finally, I would just like to wish Mrs Powell the best of luck in her marathon this Sunday. Thank you to everyone who has donated to the memory garden for Miss Bailey and to the Breast Cancer Now charity.

Wishing you all a Happy Easter. Enjoy the break, let's hope the sun shines and I will see you all on Monday 25th April.

Remember my door is always open.

Mrs Gilbert.

DATES FOR YOUR DIARY

Monday 11th – Friday 22nd April
Easter holidays

Monday 2nd May
Bank holiday Monday

Friday 6th May
Pre-School trip to Butterfly World

Monday 9th – Thursday 12th May
KS2 SATS week

Monday 30th May – Friday 3rd June
May half term

Monday 18th July
Last day of term

Tuesday 19th - Friday 22nd July
Development days

Monday 23rd July – Wednesday 31st August
Summer holidays

Thursday 1st September 2022
Development day

Healthy School

Children should only be bringing a bottle of water into school and not juice for during lesson time.

Children's lunches should be healthy and filled with nutritious choices, and please remember that we are a **nut free school**. Juice can be in lunch boxes.



FUN CLUBS FOR NEXT HALF TERM

KS2 CRICKET - MONDAYS



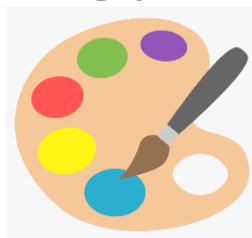
KS1 DANCE - MONDAYS



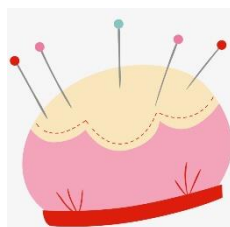
KS1 SCIENCE - TUESDAYS



KS2 ART - TUESDAYS



KS1 SEWING - TUESDAYS



KS2 SPANISH - TUESDAYS (starting 17th May)



KS2 GARDENING - WEDNESDAYS



KS1 ORIGAMI - THURSDAYS



KS2 COMPUTING - THURSDAYS



Starting week commencing Monday 25th April

All available to book via the SchoolMoney app now!

Parking at drop off and pick up times

It has come to our attention that there have been some issues with parking around the school. Please can you be considerate of other road users and residents that live along the road, do not block the road so that it stops other cars being able to enter or leave West Street and do not block residents' driveways. Yellow lines are there for a reason so please do not park on them or on the corners of the road as it makes it very difficult for others to get round. Also, at all times we have to ensure that the emergency services can have access to the street. There is parking at The Wheatsheaf and permits are available at the school office, it is only a short walk from there to the school and there is a crossing to ensure safety.

When using the disabled bays, please note that they are only to be used by parents if they have a disabled badge. Also, the disabled badge must only be used if the person it has been issued to is actually in the car. We have limited disabled parking so please be considerate.

We will be having regular visits from the Local Authority parking wardens to help us monitor this and they will be issuing tickets if necessary.

THIS WEEK AT BRADING...

This week each class finished off their topics for the term. Here are some pictures of what they did for their outcomes.



EASTER AT BRADING



Parent / Carer Questionnaire 2022

| | Strongly agree | Agree | Disagree | Strongly disagree |
|---|----------------|-------|----------|-------------------|
| My child is happy at this school | 24 | 23 | 4 | 2 |
| My child feels safe at this school | 24 | 26 | 1 | 2 |
| My child makes good progress at this school | 22 | 22 | 7 | 2 |
| My child is well looked after at this school | 29 | 20 | 4 | 0 |
| My child is taught well at this school | 28 | 18 | 6 | 1 |
| My child receives appropriate homework for their age | 19 | 26 | 6 | 2 |
| The school makes sure its pupils are well behaved | 15 | 30 | 6 | 2 |
| The school deals effectively with bullying | 20 | 27 | 3 | 3 |
| The school is well led and managed (this includes all staff in all roles) | 21 | 21 | 5 | 6 |
| The school responds well to any concerns I raise | 20 | 21 | 8 | 4 |
| I receive valuable information from school about my child's progress | 15 | 25 | 12 | 1 |
| Would you recommend this school to another parent? | YES 38 | | NO 15 | |

Areas raised in the questionnaire

Thank you for replying to our questionnaire. Please find below the areas that have been raised

1. Communication
2. Supporting behaviour

Next steps for :

1. Communication. Our aim as always it to continue to provide you all with as much information as we can and respond to you as soon as we can with any issues that you raise with us. Currently we have:

- Class emails – where you can email class teacher at any time
- Email for Covid correspondence
- Texting system for all parent and carers
- Weekly newsletter
- Website which contains lots of information
- Session for parents on specific areas- this term we have had session for KS 1 and KS 2 SATS and the year 4 times table check
- Appointment available with staff – Mrs Willshire, Miss Matson and myself are available daily
- Staff available at the end of the day
- Termly parent/carers sessions via School Cloud
- Respond to emails within 5 working days

Moving forward:

- Staff changes – where we can, we will let you know about any changes
- From September, we will have online reading records
- Developing further with staff what information we provide to you about the progress of your child/ children

2. Supporting Behaviour – we support all children as individuals and match needs as much as we can. We use Zones of Regulation to help support this. Next term Miss Matson will hold a session for anyone who wants to know more.

There are our school rules:



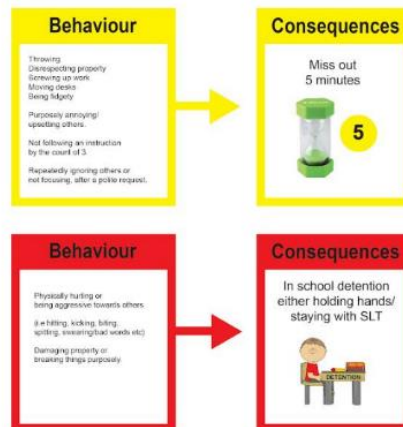
These are our sanctions:



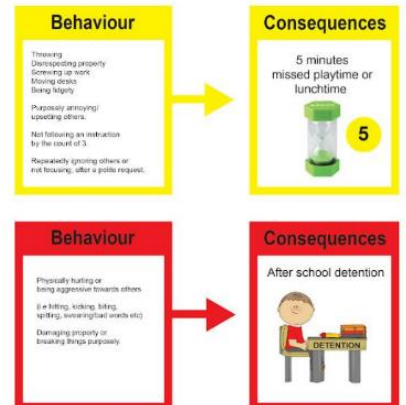
Sanctions EYFS



Sanctions KS1



Sanctions KS2



We are a **TEAM** that **TRUST** each other

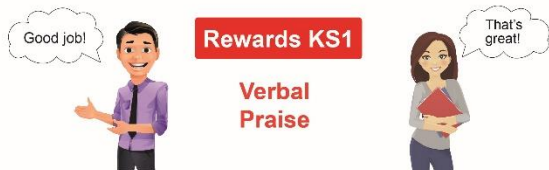


We are a **TEAM** that **TRUST** each other



We are a **TEAM** that **TRUST** each other

These are our rewards:



Rewards KS1

Verbal Praise



Written Praise and certificates

✓ Well done! 😊



Keypoints Dojos
to spend in the Keypoint shop



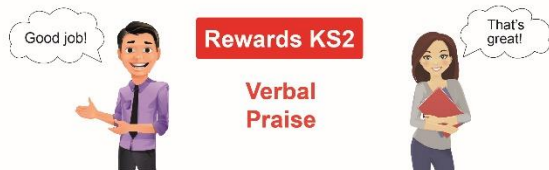
Special Stickers



Share with other classes



We are a **TEAM** that **TRUST** each other



Rewards KS2

Verbal Praise



Written Praise and certificates

✓ Well done! 😊



Keypoints Dojos
to spend in the Keypoint shop



Celebrate with the Headteacher



Share with other classes



We are a **TEAM** that **TRUST** each other

FAMILY SEEK & FIND

Follow the clues around Brading Town

Easter Monday 18th April 2022

A prize for the winner

To register: for your question sheet

Email: info@bragiow.co.uk

Phone: 07854559828



Methodist & St Mary's Churches, Brading

Sunday 10 April

***Palm Sunday
Celebration Parade***

Meet 3.30pm at St Mary's Church Hall



Join the procession to Lower Furlongs where
we will tell the story of Palm Sunday,
and afterwards for a short celebration
at Brading Methodist Church

Do meet us 3.45pm at top of
Lower Furlongs if not possible to walk

Hosanna to the King of Kings



**Brading Methodist Church
invite you to enjoy**

**Hot
Cross
Buns**

& a cuppa



**Good Friday 15 April
10am—12 noon**

Brading Methodist Church

**Family Easter
Egg Hunt**

Monday 18 April

**4pm at Beechgrove Park &
tea afterwards**

Please do not arrive before 3.45pm

Come as a family to join in the hunt

Tea, Easter film and eggs awarded
afterwards at
Methodist Church
Hall



Cost £1 per family

**Details? Contact
Jane on 407201**

Can You Help Mrs. Powell Run 26 Miles?



What am I doing?

On Sunday 10th of April I will be running in the Brighton Marathon. By the time I race, I would have been training for 16 weeks and covered 800 miles.

Who am I doing it for?

I am raising money for 2 good causes:

A new garden/forest area at Brading Primary School

UK research and care charity Breast Cancer Now.

Why am I doing it?

Over recent years breast cancer has affected my life and those of my friends and family.

Some of you may remember Miss Bailey (Shelly), a teacher at Brading Primary, who was sadly taken from us at such a young age by the disease.

Shelly was happiest when she was working with the children, exploring the outdoors. The staff at the school would like to create a memorial forest garden where children can play and learn.

What you can do to help:

You can support the causes by sponsoring me.

My sponsorship forms will be in the school reception, with me or you can email the school office with any donation pledge.

All funds raised in school will be put towards the memorial garden.

If you would like to donate further towards Breast Cancer Now, I have a Just Giving page. Search for Rachel Powell and then scroll down to find this photo. Then click on my name to be taken to my page.



COVID

BUBBLES

As rates are still high on the island, we are continuing to reduce contact so we will be working within the same bubbles. Lunches will continue to take place within the classrooms.

TRIGGER POINTS / THRESHOLDS

We follow national guidance and we will not be informing parents/carers when individual cases arise in school. However, we do have trigger points/threshold which is when:

- There are 5 positive cases among pupils or staff who are likely to have mixed closely within a 10 day period.
- 10% of pupils or staff who are likely to have mixed closely test positive within a 10 day period.

We will then contact the DFE helpline and follow their guidance as well as the Health and Security agency recommendations, which could include just a letter sent to parents/carers of those children affected or having to move to remote learning.

To help with this, we need to know if your child tests positive or if they have any of the following symptoms:

- High temperature
- A new continuous cough
- Loss or change to sense of smell and/or taste

Your child should not be in school if they do have the above symptoms and we will be asking you to collect your children if they present these in school.

ABSENCE

- 1- If you test your child and they are positive, they need to stay off school for a minimum of 3 days. They should stay at home and avoid contact with others. They can return to school after 3 days if they do not have a temperature.
- 2- Children and young people who are unwell and have a high temperature should stay at home and avoid contact with other people. They can go back to school, college or childcare when they no longer have a high temperature, and they are well enough to attend

VACCINATIONS 5-11 YEAR OLDS

All Children aged 5-11 will now be eligible for their first jabs as the COVID-19 programme rolls the vaccine out across Hampshire and the Isle of Wight. The vaccine is a specially developed paediatric version for children. Parents are able to access the vaccine through vaccination centres, local pharmacies and GPs. There has been an overwhelming response from parents who would like to vaccinate their children and teams across Hampshire and Isle of Wight are working hard to provide additional capacity. Parents are able to find their nearest vaccination site via the NHS website, by calling 119 or by calling the Hampshire and Isle of Wight COVID-19 helpline on 0300 561 0018 which can help find and book slots or direct you to your nearest walk-in. New sites and vaccination slots are uploaded all the time so please check regularly.